



SIoux POWER TOOLS

A Snap-on Company

European Catalogue

DRILLS



SPECIALTY



ASSEMBLY



ABRASIVE



PERCUSSIVE



FINISHING





DRILLS7
 DRILLS 8 - 14

ASSEMBLY15
 SCREWDRIVERS16 - 24
 NUTRUNNERS25
 IMPACT WRENCHES26 - 27

ABRASIVE29
 GRINDERS30 - 31

FINISHING33
 SANDERS34 - 36

SPECIALTY37
 ROUTERS38
 TAPPERS39
 CLINCH NUT TOOLS40
 RIVET SHAVERS41
 SKIN CLAMP RUNNERS42
 SHEARS43
 COMPRESSION RIVETERS44 - 47
 PNEUMATIC SAWS48
 SPECIALTY ACCESSORIES49

DRILLS

ASSEMBLY

ABRASIVE

FINISHING

PERCUSSIVE

SPECIALTY

ACCESSORIES



MODEL NUMBER INDEX

	MODEL	PAGE	MODEL	PAGE	MODEL	PAGE	MODEL	PAGE	MODEL	PAGE
DRILLS	1410.....	8	1454ESR.....	9	1DA211.....	35	1ST2208Q.....	22	2P2103ASQ.....	17
	1410R.....	9	1455ES.....	8	1DA221HP.....	31	1ST2308Q.....	22	2P2105.....	20
ASSEMBLY	1412R.....	9	1455ESB.....	8	1DA221HP.....	35	1ST2508Q.....	22	2P2105Q.....	20
	1420.....	10	1455ESR.....	9	1DA221M6.....	31	2A1120.....	11	2P2203AQ.....	17
ABRASIVE	1446ES.....	43	1456ES.....	8	1DA221M6.....	35	2A1310.....	11	2P2203Q.....	17
	1449ES.....	8	1457ES.....	8	1DA321M6.....	31	2A1410-AH.....	12	2P2205Q.....	20
FINISHING	1449ESB.....	8	1954HPM6.....	30	1DA321M6.....	35	2A1630.....	11	2P2303.....	17
	1449ESR.....	9	1955HPM8.....	30	1DS121.....	30	2A2310.....	11	2P2303A.....	17
PERCUSSIVE	1450ES.....	8	1956HPEXTM6.....	30	1OM2107.....	18	2L1310.....	10	2P2303AQ.....	17
	1450ESB.....	8	1956HPM6.....	30	1OM2203.....	17	2L1410.....	10	2P2305.....	20
SPECIALTY	1450ESR.....	9	1971HP.....	38	1OM2403.....	17	2L1430.....	10	2P2305Q.....	20
	1451ES.....	8	1971HPB.....	38	1OM2407.....	18	2L1630.....	10	2P2307.....	18
ACCESSORIES	1451ESR.....	9	1971HPD.....	38	1OT2108Q.....	22	2L2105Q.....	21	2P2601.....	23
	1452ES.....	8	1AM1451.....	12	1OT2508Q.....	22	2L2230.....	10	2P2603A.....	17
DRILLS	1452ES3/8.....	8	1AM1541.....	12	1SM2105Q.....	21	2L2305Q.....	21	2P2603AQ.....	17
	1452ESR3/8.....	9	1AM1551.....	12	1SM2407.....	19	2L2410.....	10	2P2603ASQ.....	17
ASSEMBLY	1453ES.....	8	1AM2106.....	24	1ST2108.....	22	2L2507.....	16	2S1330.....	13
	1454ES.....	8	1DA211.....	31	1ST2108Q.....	22	2P2103AQ.....	17	2S2300SR.....	42



MODEL	PAGE	MODEL	PAGE	MODEL	PAGE	MODEL	PAGE	MODEL	PAGE
2S2310	13	IW75BP-8H	26	RO2512-60SRH	34	SZEA60152.....	46	SZES100.....	48
2S2330	13	NR2A2108BTC	24	RO2512-60SVH	34	SZEA7000.....	45	SZES101.....	48
CN9L12	40	RO2512-50CNH	34	RS9A-210-8	41	SZEA7015.....	45	TP9A-4C20	39
CN9L20	40	RO2512-50CRH....	34	RT8AKS18N.....	38	SZEA70152.....	45	TP9A-4C32	39
CN9L25	40	RO2512-50CVH	34	RT8AKS23N.....	38	SZEA7022.....	45		
CN9L4	40	RO2512-50FNH	34	SR9A-25	42	SZEA70222.....	45		
CN9L7	40	RO2512-50FRH	34	SZEA3000.....	46	SZEA7030.....	45		
CN9P12	40	RO2512-50FVH	34	SZEA3015.....	46	SZEA70302.....	45		
CN9P25	40	RO2512-50SNH	34	SZEA30152.....	46	SZEA80000.....	46		
CN9P4	40	RO2512-50SRH	34	SZEA5000.....	45	SZEA8015.....	46		
CN9P7	40	RO2512-50SVH	34	SZEA5015.....	45	SZEA80152.....	46		
DR1407.....	8	RO2512-60CNH	34	SZEA50152.....	45	SZEA9000.....	45		
DR1412.....	8	RO2512-60CRH....	34	SZEA5022.....	45	SZEA9015.....	45		
DR1422.....	10	RO2512-60CVH	34	SZEA50222.....	45	SZEA90152.....	45		
IW38HAP-3P	25	RO2512-60FNH	34	SZEA5030.....	45	SZEA9022.....	45		
IW38HAP-4P	25	RO2512-60FRH	34	SZEA50302.....	45	SZEA90222.....	45		
IW50HAP-4P	25	RO2512-60FVH	34	SZEA6000.....	46	SZEA9030.....	45		
IW75BP-6H	26	RO2512-60SNH	34	SZEA6015.....	46	SZEA90302.....	45		

DRILLS

ASSEMBLY

ABRASIVE

FINISHING

PERCUSSIVE

SPECIALTY

ACCESSORIES



Catalog Guide

Color-coded Tabs

Quick reference indicator to locate a particular section

Product Description

Instant reference to the type of tools displayed

Performance

Range of principle performance characteristics

Features

List of significant features common to all items

Specification Chart

Comparison chart of all models in this category including performance specifications and characteristics

General Info

Specifications that are common to all tools on the page

Standard Equipment

Listing of items that are included with purchase

Photos

Visual reference of selective models

DRILLS

PISTOL GRIP DRILLS

Performance:
 Power: 0.38 hp (0.28 kW) - 1.0 hp (0.75 kW)
 Speed Range: 300 rpm - 20,000 rpm
 Chuck Capacity: 1/4" (6.3 mm) - 1/2" (12 mm)

Features:
 Non-reversible
 Trigger Start
 Rotatable Exhaust (1407, 1410, 1412 models)
 Rapid Reverse
 Comfort Grip

Model Number	Chuck Capacity (in / mm)	Free Speed (rpm)	Weight (lb / kg)	Length (in / mm)	Size to Center (in / mm)	Air Consumption (cfm / l)	Sound Level (dB(A))	Vibration (ms/s)
0.38 hp (0.28 kW) Non-reversible								
1410	1/4"	3000	1.0	10.8	8.0	1.0	85	1.0
1412	1/4"	3000	1.0	10.8	8.0	1.0	85	1.0
1410E	1/4"	3000	1.0	10.8	8.0	1.0	85	1.0
1412E	1/4"	3000	1.0	10.8	8.0	1.0	85	1.0
0.50 hp (0.37 kW) Non-reversible								
1407E	1/4"	3000	1.1	11.0	8.0	1.0	85	1.0
1408E	1/4"	3000	1.1	11.0	8.0	1.0	85	1.0
1409E	1/4"	3000	1.1	11.0	8.0	1.0	85	1.0
1410E	1/4"	3000	1.1	11.0	8.0	1.0	85	1.0
1411E	1/4"	3000	1.1	11.0	8.0	1.0	85	1.0
1412E	1/4"	3000	1.1	11.0	8.0	1.0	85	1.0
1413E	1/4"	3000	1.1	11.0	8.0	1.0	85	1.0
1414E	1/4"	3000	1.1	11.0	8.0	1.0	85	1.0
1415E	1/4"	3000	1.1	11.0	8.0	1.0	85	1.0
1416E	1/4"	3000	1.1	11.0	8.0	1.0	85	1.0
1417E	1/4"	3000	1.1	11.0	8.0	1.0	85	1.0
1418E	1/4"	3000	1.1	11.0	8.0	1.0	85	1.0
1419E	1/4"	3000	1.1	11.0	8.0	1.0	85	1.0
1420E	1/4"	3000	1.1	11.0	8.0	1.0	85	1.0
0.75 hp (0.55 kW) Non-reversible								
1421E	1/2"	1000	2.1	14.0	10.0	2.0	90	1.5
1422E	1/2"	1000	2.1	14.0	10.0	2.0	90	1.5
1423E	1/2"	1000	2.1	14.0	10.0	2.0	90	1.5
1424E	1/2"	1000	2.1	14.0	10.0	2.0	90	1.5
1425E	1/2"	1000	2.1	14.0	10.0	2.0	90	1.5
1426E	1/2"	1000	2.1	14.0	10.0	2.0	90	1.5
1427E	1/2"	1000	2.1	14.0	10.0	2.0	90	1.5
1428E	1/2"	1000	2.1	14.0	10.0	2.0	90	1.5
1429E	1/2"	1000	2.1	14.0	10.0	2.0	90	1.5
1430E	1/2"	1000	2.1	14.0	10.0	2.0	90	1.5
1431E	1/2"	1000	2.1	14.0	10.0	2.0	90	1.5
1432E	1/2"	1000	2.1	14.0	10.0	2.0	90	1.5
1433E	1/2"	1000	2.1	14.0	10.0	2.0	90	1.5
1434E	1/2"	1000	2.1	14.0	10.0	2.0	90	1.5
1435E	1/2"	1000	2.1	14.0	10.0	2.0	90	1.5
1436E	1/2"	1000	2.1	14.0	10.0	2.0	90	1.5
1437E	1/2"	1000	2.1	14.0	10.0	2.0	90	1.5
1438E	1/2"	1000	2.1	14.0	10.0	2.0	90	1.5
1439E	1/2"	1000	2.1	14.0	10.0	2.0	90	1.5
1440E	1/2"	1000	2.1	14.0	10.0	2.0	90	1.5
1441E	1/2"	1000	2.1	14.0	10.0	2.0	90	1.5
1442E	1/2"	1000	2.1	14.0	10.0	2.0	90	1.5
1443E	1/2"	1000	2.1	14.0	10.0	2.0	90	1.5
1444E	1/2"	1000	2.1	14.0	10.0	2.0	90	1.5
1445E	1/2"	1000	2.1	14.0	10.0	2.0	90	1.5
1446E	1/2"	1000	2.1	14.0	10.0	2.0	90	1.5
1447E	1/2"	1000	2.1	14.0	10.0	2.0	90	1.5
1448E	1/2"	1000	2.1	14.0	10.0	2.0	90	1.5
1449E	1/2"	1000	2.1	14.0	10.0	2.0	90	1.5
1450E	1/2"	1000	2.1	14.0	10.0	2.0	90	1.5

General: All tools meet IEC 60745-1 requirements based on IEC 60745-1-101 and IEC 60745-1-102. Performance based on ISO 5273:2001 air pressure. Tools operate with ESDPT at their own risk. **Standard Equipment:** Bits set, Safety and instruction manual, 2 pin Chuck & Key, Comfort Grip. *Support handle included.

Accessories: See Accessories, see pages 24-26

Safety Info: SAFETY Precaution: Read and follow all safety and operating instructions. **Warnings:** Face and eye protection must be worn while operating power tools, per ANSI Z359.1

Accessories

Shows what accessories are available or where to locate them in the catalog

Safety Info

A brief reminder of safety when operating industrial power tools



Catalog Guide

Standard Equipment

Under this heading a specification is given for each type of tool and of the parts (nipples, keys, guards, etc.) supplied with the tool.

A parts list and safety and instruction manual are always included in the package with every tool.

Air consumption

The air consumption of the tools is stated in cubic feet per minute (cfm) and liters per second, l/s, and relates to free air, i.e., the compressed air expanded to atmospheric pressure. Unless otherwise stated, the figures are valid at a working pressure of 90 psig (6.2 bar) and indicate the maximum air consumption unless otherwise stated.

Maximum air consumption for non-governed tools is achieved at free speed when the tool is running at no load. A tool with governed speed control has the maximum air consumption at the maximum power output.

Speed

The tool speeds are indicated in revolutions per minute, (rpm), and indicate the free speed, i.e., the speed at which the tool runs at no load and at a working pressure of 90 psig (6.2 bar), unless otherwise specified. The speed at maximum output is estimated as 50% of the idling speed for non-governed tools and 80-90% of the idling speed for tools with governed speed control.

Model Number

Many tools have very similar performance characteristics. These subtle differences are often indicated by the addition of letters after the model number.

Weight and Length

The weight of the tools is listed in both pounds (lb) and kilograms (kg), and the length is listed in both inches (in) and millimeters (mm).

Side to Center

This measurement is taken from the center of the tool to the outside edge. It is useful for applications requiring the tool to fit into a precise or limited space.

Sound Level

In the field of ergonomics, sound level is very important to the safety and well-being of the operator. Sound levels are listed, where applicable, in decibels db(A)

Quick Conversion Chart

Length

1 in.	=	0.0254 m
1 m	=	39.3701 in.
1 m	=	3.2808 ft
1 in.	=	25.4 mm
1 ft	=	304.8 mm
1 mm	=	0.03937 in.

Weight

1 lb	=	0.4536 kg
1 kg	=	2.2046 lb

Torque

1 kpm	=	9.8067 Nm
1 ft lb	=	1.3558 Nm
1 in. lb	=	0.1130 Nm
1 Nm	=	0.1020 kpm
1 Nm	=	0.7376 ft lb

Pressure

1 bar	=	100 kPa
1 kg/cm ² (at)	=	98.0665 kPa
1 psi	=	6.8948 kPa
1 kPa	=	0.145 psi
1 kPa	=	0.01 bar
1 kPa	=	0.0101972 kg/cm ² (at)

Power

1 kgm/s	=	9.8067 w
1 hp	=	745.7 w
1 kw	=	101.972 kgm/s
1 kw	=	1.3410 hp

Flow

1 m ³ /min	=	16.6667 l/s
1 cfm	=	0.4720 l/s
1 m ³ /h	=	0.2778 l/s
1 l/s	=	2.1189 cfm



Industrial Tools

Sioux Tools is known around the world for quality, durability and performance. Our extensive and always expanding line of industrial power tools are engineered to make any job easier, safer and more efficient. We build tools that stand up to the demanding specifications required by today's industrial manufacturing, assembly and finishing needs. Our industrial line of tools is second to none in power, workmanship and total quality.

We Design Tools To Fit The Application

Sioux has been an innovator in designing tools that fill unique applications. The exclusive Z-handle design enables manufacturers to have a tool that will fit into extremely tight spaces yet maintain the full industrial power.

Research & Development

As new manufacturing techniques develop they bring with them new demands that may not be met with conventional air tools. Sioux Tools is ready to meet these needs by utilizing our engineering technology coupled with the latest innovations and technological advancements in the power tool industry.

We research the need to develop a new tool and then our Sioux team of engineers and designers go to work to produce the most efficient and versatile tool possible. We are constantly working to increase our product offering, but those new products must live up to our high expectations. Our extensive design engineering, research and development experience has proven our ability and commitment to build quality tools.

Continuous Quality Control

Every Sioux product undergoes rigorous performance tests at precise stages from design conception through product assembly and packaging to ensure they meet our own high standards and the demands of our customers. Only the finest materials are used in production, and no tool leaves our plant without thorough testing to meet Sioux quality standards. We've built our reputation on producing top-of-the-line industrial tools.



**SIoux
TOOLS INC.**

For the way you work



DRILLS



DRILLS



Index

Drills 8 - 14

PISTOL GRIP DRILLS

Performance:

Power: 0.33 hp (0.25 kw) - 0.90 hp (0.67 kw)
 Speed Range: 500 rpm - 20,000 rpm
 Chuck Capacity: 1/4" (6.5 mm) - 1/2" (13 mm)

Features:

Non-reversible
 Trigger Start
 Rotatable Exhaust (1407, 1410, 1412 models)
 Rapid Reverse
 Comfort Grip



1410



1454ES



Model Number	Chuck Capacity		Free Speed rpm	Weight		Length		Side To Center		Air Consumption		Sound Level dB(A)	Spindle Thread
	in.	mm		lb	kg	in.	mm	in.	mm	cfm	l/s		
0.33 hp (0.25 kw) - Non-reversible													
DR1412	1/4	6	3600	1.3	0.6	6.3	160	0.6	15	12	6	75	3/8"-24
1410	1/4	6	2600	1.3	0.6	6.3	160	0.6	15	12	6	75	3/8"-24
DR1407	1/4	6	950	1.3	0.6	6.7	170	0.6	15	12	6	75	3/8"-24
0.90 hp (0.67 kw) - Non-reversible													
1457ES	1/4	6	20,000	2.1	1.0	6.0	152	0.9	23	28	13	78	3/8"-24
1456ES	1/4	6	6000	2.5	1.1	7.0	178	0.8	20	30	14	78	3/8"-24
1453ES	1/4	6	4500	2.5	1.1	7.0	178	0.8	20	30	14	78	3/8"-24
1452ES	1/4	6	3300	2.5	1.1	7.0	178	0.8	20	30	14	78	3/8"-24
1450ES	1/4	6	2600	2.5	1.1	7.0	178	0.8	20	30	14	78	3/8"-24
1452ES3/8	3/8	10	3300	2.6	1.2	7.0	178	0.8	20	30	14	78	3/8"-24
1454ES	3/8	10	2600	2.6	1.2	7.0	178	0.8	20	30	14	78	3/8"-24
1451ES	3/8	10	1600	3.1	1.4	8.2	208	0.9	23	30	14	78	3/8"-24
1455ES	3/8	10	1000	3.1	1.4	8.2	208	0.9	23	30	14	78	3/8"-24
1449ES	3/8	10	500	3.1	1.4	8.2	208	0.9	23	30	14	78	1/2"-20
1450ESB	1/2	13	2600	2.8	1.3	7.0	178	0.8	20	30	14	78	3/8"-24
1455ESB ¹	1/2	13	1000	3.3	1.5	8.7	221	0.9	23	30	14	78	3/8"-24
1449ESB ¹	1/2	13	500	3.3	1.5	8.7	221	0.9	23	30	14	78	1/2"-20

General:
 Air Inlet Size: 1/4" NPT
 Recommended Hose Size: 1/4" (6 mm) (1400 series); 3/8" (10 mm) (1450 series)
 Performance rated @ 90 psig (6.2 bar) air pressure
 Tools available with BSPT air inlet upon request
Standard Equipment:
 Parts list, Safety and Instruction manual
 3-jaw Chuck & Key
 Comfort Grip

¹Support handle included



PISTOL GRIP DRILLS

Performance:

Power: 0.20 hp (0.15 kw) - 0.60 hp (0.45 kw)

Speed Range: 450 rpm - 2600 rpm

Chuck Capacity: 1/4" (6 mm) - 3/8" (10 mm)



1410R

Features:

Reversible

Trigger Start

Rapid Reverse

Comfort Grip



Model Number	Chuck Capacity		Free Speed rpm	Weight		Length		Side To Center		Air Consumption		Sound Level dB(A)	Spindle Thread
	in.	mm		lb	kg	in.	mm	in.	mm	cfm	l/s		
0.20 hp (0.15 kw) - Reversible													
1412R	1/4	6	2600	1.3	0.6	6.3	160	0.6	15	10	5	75	3/8"-24
1410R	1/4	6	2000	1.3	0.6	6.3	160	0.6	15	10	5	75	3/8"-24
0.60 hp (0.45 kw) - Reversible													
1450ESR	1/4	6	2000	2.6	1.2	7.5	191	0.8	20	25	12	78	3/8"-24
1452ESR3/8	3/8	10	2400	2.9	1.3	7.5	191	0.8	20	25	12	78	3/8"-24
1454ESR	3/8	10	2000	2.9	1.3	7.5	191	0.8	20	25	12	78	3/8"-24
1451ESR	3/8	10	1200	3.2	1.5	8.7	221	0.9	23	25	12	78	3/8"-24
1455ESR	3/8	10	700	3.2	1.5	8.7	221	0.9	23	25	12	78	3/8"-24
1449ESR	3/8	10	450	3.2	1.5	8.7	221	0.9	23	25	12	78	3/8"-24

General:

Air Inlet Size: 1/4" NPT

Recommended Hose Size: 1/4" (6 mm) (1400 series); 3/8" (10 mm) (1450 series)

Performance rated @ 90 psig (6.2 bar) air pressure

Tools available with BSPT air inlet upon request

Standard Equipment:

Parts list, Safety and Instruction manual

3-jaw Chuck & Key

Comfort Grip



SAFETY Precaution: Read and follow all safety and operating instructions.

WARNING: Face & eye protection must be worn while operating power tools



STRAIGHT DRILLS

Performance:

Power: 0.33 hp (0.25 kw) - 0.75 hp (0.56 kw)

Speed: 1600 rpm - 5800 rpm

Chuck Capacity: 1/4" (6 mm) - 3/8" (10 mm)

Features:

Reversible and Non-reversible

Lever Start

Rear Exhaust



Model Number	Chuck Capacity		Free Speed rpm	Weight		Length		Side To Center		Air Consumption		Sound Level dB(A)	Spindle Thread
	in.	mm		lb	kg	in.	mm	in.	mm	cfm	l/s		
0.33 hp (0.25 kw) - Non-reversible													
DR1422	1/4	6	3600	1.2	0.54	8.0	203	.6	15	12	6	75	3/8"-24
1420	1/4	6	2600	1.2	0.54	8.0	203	.6	15	12	6	75	3/8"-24
0.75 hp (0.56 kw) - Non-reversible													
2L1410	1/4	6	5800	2.3	1.0	8.9	226	1.0	25	28	13	85	3/8"-24
2L1310	1/4	6	3350	2.3	1.0	8.9	226	1.0	25	28	13	85	3/8"-24
2L1430	3/8	10	5800	2.4	1.1	8.9	226	1.0	25	28	13	85	3/8"-24
2L1630	3/8	10	2600	2.4	1.1	8.9	226	1.0	25	28	13	85	3/8"-24
0.50 hp (0.37 kw) - Reversible													
2L2410	1/4	6	4400	2.6	1.2	9.3	236	1.0	25	24	11	84	3/8"-24
2L2230	3/8	10	1600	3.1	1.4	11.0	279	1.0	25	24	11	84	3/8"-24

General:
 Air Inlet Size: 1/4" NPT
 Recommended Hose Size: 1/4" (6 mm) (1400 series); 3/8" (10 mm) (2L series)
 Performance rated @ 90 psig (6.2 bar) air pressure
 Tools available with BSPT air inlet upon request

Standard Equipment:
 Parts list, Safety and Instruction manual
 Suspension Bail
 3-jaw Chuck & Key
 Comfort Grip

SAFETY Precaution: Read and follow all safety and operating instructions.



WARNING: Face & eye protection must be worn while operating power tools



RIGHT ANGLE DRILLS

Performance:

Power: 0.50 hp (0.37 kw) - 0.75 hp (0.56 kw)

Speed: 900 rpm - 3350 rpm

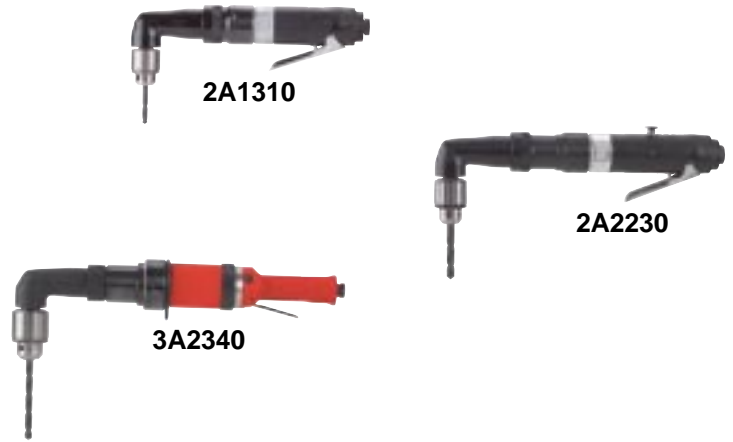
Chuck Capacity: 1/4" (6 mm) - 3/8" (10 mm)

Features:

Reversible & Non-reversible

Lever Start

Rear or Side Exhaust



Model Number	Chuck Capacity		Free Speed rpm	Weight		Length		Side To Center		Air Consumption		Sound Level dB(A)	Spindle Thread
	in.	mm		lb	kg	in.	mm	in.	mm	cfm	l/s		
0.50 hp (0.37 kw) - Reversible - Rear Exhaust													
2A2310	1/4	6	2500	3.7	1.7	11.5	292	0.7	18	24	11	84	3/8"-24
0.75 hp (0.56 kw) - Non-reversible - Rear Exhaust													
2A1310	1/4	6	3350	3.6	1.6	10.6	269	0.7	18	28	13	85	3/8"-24
2A1630	3/8	10	2600	3.7	1.7	10.6	269	0.7	18	28	13	85	3/8"-24
2A1120 ¹	1/2	13	900	4.0	1.8	12.0	305	0.7	18	28	13	85	3/8"-24

General:

Air Inlet Size: 1/4" NPT
 Recommended Hose Size: 3/8" (10 mm)
 Performance rated @ 90 psig (6.2 bar) air pressure
 Tools available with BSPT air inlet upon request

Standard Equipment:

Parts list, Safety and Instruction manual
 3-jaw Chuck & Key

¹ Tools intended for low speed applications only, high maintenance should be expected if used in the upper torque range.

DRILLS

ASSEMBLY

ABRASIVE

FINISHING

PERCUSSIVE

SPECIALTY

ACCESSORIES



SAFETY Precaution: Read and follow all safety and operating instructions.
WARNING: Face & eye protection must be worn while operating power tools



AIRCRAFT ANGLE DRILLS

Performance:

Power: 0.33 hp (0.25 kw) - 0.75 hp (0.56 kw)

Speed: 2200 rpm - 5800 rpm

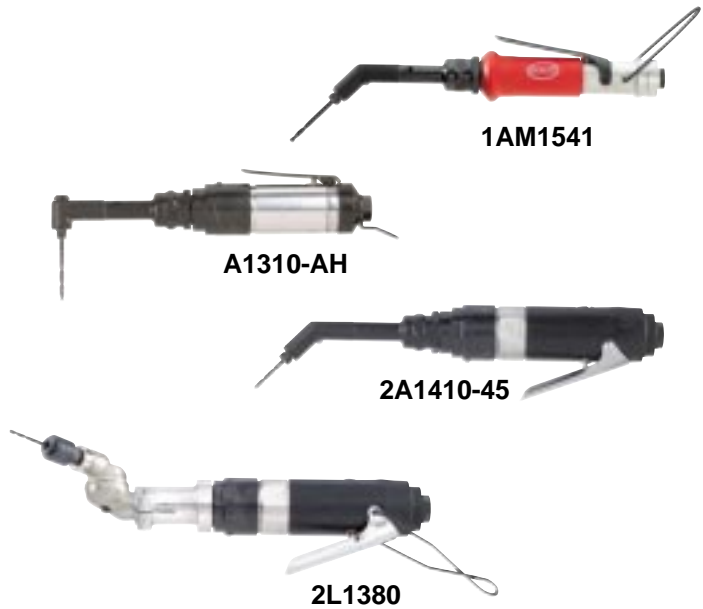
Features:

Non-reversible

Lever Start

Rear Exhaust

45° or 90° Miniature Angle Heads (except 2L1380)



Model Number	Free Speed	Weight		Length		Side To Center		Air Consumption		Sound Level
	rpm	lb	kg	in.	mm	in.	mm	cfm	l/s	dB(A)
45° Angle Head - 0.33 hp (0.25 kw) - 1/4"-28 Internal Thread Spindle										
1AM1541	2800	1.5	0.7	10.2	259	0.3	8	12	6	75
90° Angle Head - 0.33 hp (0.25 kw) - 1/4"-28 Internal Thread Spindle										
1AM1551	2800	1.5	0.7	9.7	246	0.3	8	12	6	75
1AM1451	2200	1.5	0.7	9.7	246	0.3	8	12	6	75
90° Angle Head - 0.75 hp (0.56 kw) - 1/4"-28 Internal Thread Spindle										
2A1410-AH	5800	2.7	1.3	11.4	290	0.3	8	28	13	85

<p>General: Air Inlet Size: 1/4" NPT Recommended Hose Size: 1/4" (6 mm) (1AM series); 3/8" (10 mm) (2A series) Performance rated @ 90 psig (6.2 bar) air pressure Tools available with BSPT air inlet upon request</p>	<p>Standard Equipment: Parts list, Safety and Instruction manual Comfort Grip (1AM Series)</p>
--	---



SAFETY Precaution: Read and follow all safety and operating instructions.

WARNING: Face & eye protection must be worn while operating power tools

Z-HANDLE DRILLS

Performance:

Power: 0.33 hp (0.25 kw) - 0.50 hp (0.37 kw)

Speed: 2200 rpm

Chuck Capacity: 1/4" (6 mm) - 3/8" (10 mm)

Features:

Reversible & Non-reversible

Lever Start

360° Rotatable Exhaust

Suspension Bail



Model Number	Chuck Capacity		Free Speed rpm	Weight		Length		Side To Center		Air Consumption		Sound Level dB(A)	Spindle Thread
	in.	mm		lb	kg	in.	mm	in.	mm	cfm	l/s		
Reversible - 0.33 hp (0.25 kw)													
2S2310	1/4	6	2200	2.6	1.2	3.5	89	1.0	25	16	8	75	3/8"-24
2S2330	3/8	10	2200	2.7	1.2	3.8	97	1.0	25	16	8	75	3/8"-24
Non-reversible - 0.50 hp (0.37 kw)													
2S1330	3/8	10	2200	2.7	1.2	3.8	97	1.0	25	18	8	75	3/8"-24

<p>General: Air Inlet Size: 1/4" NPT Recommended Hose Size: 3/8" (10 mm) Performance rated @ 90 psig (6.2 bar) air pressure Tools available with BSPT air inlet upon request</p>	<p>Standard Equipment: Parts list, Safety and Instruction manual 3-jaw Chuck & Key Suspension Bail</p>
---	--

- DRILLS
- ASSEMBLY
- ABRASIVE
- FINISHING
- PERCUSSIVE
- SPECIALTY
- ACCESSORIES



SAFETY Precaution: Read and follow all safety and operating instructions.
WARNING: Face & eye protection must be worn while operating power tools



Vacforce

Part No. 1557

**Drill Sold Separately*



Length		Width		Weight		Air Supply	Inlet
in.	mm	in.	mm	lb	kg		
11.0	280	3.75	95	7.6	3.5	2.0 CFM	1/4" NPT

Standard Accessories:
 Adaptor Shims
 5mm Hex key stored in vacuum base

Pipe-Vac Adaptor

Part No. 1557P



**Drill Sold Separately*

Air Feed Lubricator

Part No. 1557L



**Drill Sold Separately*

SAFETY Precaution: Read and follow all safety and operating instructions.



WARNING: Face & eye protection must be worn while operating power tools





ASSEMBLY



ASSEMBLY



Index

Screwdrivers	16 - 24
Nutrunners	25
Impact Wrenches	26 - 27

DRILLS

STALL INLINE SCREWDRIVERS

Performance:

Torque: 325 in. lb (36.7 Nm)

Speed: 400 rpm



2L2507

ASSEMBLY

Features:

Reversible

Lever Start

Rear Exhaust

Suspension Bail

ABRASIVE



Model Number	Maximum Torque (Soft Joint)		Free Speed rpm	Weight		Length		Side To Center		Sound Level dB(A)
	in. lb	Nm		lb	kg	in.	mm	in.	mm	
Inline - Reversible - 1/4" Quick Change Drive										
2L2507	325	36.7	400	2.8	1.3	10.0	254	0.9	23	84

FINISHING

General:

Air Inlet Size: 1/4" NPT

Recommended Hose Size: 3/8" (10 mm) (2L)

Performance rated @ 90 psig (6.2 bar) air pressure

Tools available with BSPT air inlet upon request

Standard Equipment:

Parts list, Safety and Instruction manual

Comfort Grip (1SM series)

Suspension Bail

PERCUSSIVE

SPECIALTY

ACCESSORIES



SAFETY Precaution: Read and follow all safety and operating instructions.



WARNING: Face & eye protection must be worn while operating power tools

POSITIVE CLUTCH PISTOL GRIP SCREWDRIVERS

Performance:

Torque: 24 in. lb (2.7 Nm) - 180 in. lb (20.0 Nm)

Speed: 700 rpm - 2500 rpm

Features:

Reversible

Trigger Start

Trigger or Rapid Reverse

Comfort Grip (1OM)

Rotatable Exhaust



Model Number		Maximum Torque ¹ (Soft Joint)		Free Speed	Weight		Length		Side To Center		Sound Level
1/4" Quick Change	1/4" Internal Hex	in. lb	Nm	rpm	lb	kg	in.	mm	in.	mm	dB(A)
1 Series - Rapid Reverse											
		24	2.7	2000	1.6	0.7	6.7	170	0.7	17	75
		40	4.5	1000	1.8	0.8	7.7	196	0.7	17	75
2 Series - Low Torque - Trigger Reverse											
	2P2303	45	5.1	2500	2.6	1.2	6.8	173	0.9	23	82
	2P2203Q	80	9.0	1200	3.1	1.4	8.0	203	0.9	23	82
2 Series - Mid Torque Clutch - Trigger Reverse											
	2P2303AQ	50	5.7	2500	2.6	1.2	6.8	173	0.9	23	82
	2P2603AQ	65	7.3	2000	2.6	1.2	6.8	173	0.9	23	82
	2P2203AQ	100	11.3	1200	3.1	1.4	8.0	203	0.9	23	82
	2P2103AQ	180	20	700	3.1	1.4	8.0	203	0.9	23	82
2 Series - High Torque Clutch - Trigger Reverse											
	2P2603ASQ	65	7.3	2000	2.6	1.2	6.8	173	0.9	23	82
	2P2103ASQ	180	20	700	3.1	1.4	8	203	0.9	23	82

General:

Air Inlet Size: 1/4" NPT

Performance rated @ 90 psig (6.2 bar) air pressure

Recommended Hose Size: 1/4" (6 mm) (1OM series);

3/8" (10 mm) (2P series)

Tools available with BSPT air inlet upon request

Standard Equipment:

Parts list, Safety and Instruction manual

Comfort Grip (1OM series)

¹ Torque output varies with force exerted by operator



SAFETY Precaution: Read and follow all safety and operating instructions.

WARNING: Face & eye protection must be worn while operating power tools



DRILLS

ASSEMBLY

ABRASIVE

FINISHING

PERCUSSIVE

SPECIALTY

ACCESSORIES

DRILLS

ASSEMBLY

ABRASIVE

FINISHING

PERCUSSIVE

SPECIALTY

ACCESSORIES

STALL PISTOL GRIP SCREWDRIVERS

Performance:

Torque: 24 in. lb (2.7 Nm) - 55 in. lb (6.2 Nm)

Speed: 725 rpm - 2500 rpm

Features:

Reversible

Trigger Start

Trigger Reverse

Comfort Grip (10M series)

1/4" Quick Change



Model Number	Maximum Torque (Soft Joint)		Free Speed rpm	Weight		Length		Side To Center		Sound Level dB(A)
	in. lb	Nm		lb	kg	in.	mm	in.	mm	
Trigger Start - Trigger Reverse										
10M2407	24	2.7	2000	1.6	0.7	6.7	170	0.7	18	75
10M2107	55	6.2	725	1.8	0.8	7.7	196	0.7	18	75
2P2307	55	6.2	2500	2.3	1.0	8.8	224	0.9	23	82

<p>General: Air Inlet Size: 1/4" NPT Recommended Hose Size: 1/4" (6 mm) (10M series); 3/8" (10 mm) (2P series) Performance rated @ 90 psig (6.2 bar) air pressure Tools available with BSPT air inlet upon request</p>	<p>Standard Equipment: Parts list, Safety and Instruction manual Comfort Grip (10M series)</p>
---	---



SAFETY Precaution: Read and follow all safety and operating instructions.



WARNING: Face & eye protection must be worn while operating power tools

STALL INLINE SCREWDRIVERS

Performance:

Torque: 24 in. lb (2.7 Nm)

Speed: 2200 rpm

Features:

Reversible

Lever Start

Rear Exhaust

Suspension Bail



1SM2107



Model Number	Maximum Torque (Soft Joint)		Free Speed rpm	Weight		Length		Side To Center		Sound Level dB(A)
	in. lb	Nm		lb	kg	in.	mm	in.	mm	
Inline - Reversible - 1/4" Quick Change Drive										
1SM2407	24	2.7	2200	1.3	0.6	8.1	206	0.6	15	75

General:

Air Inlet Size: 1/4" NPT

Recommended Hose Size: 1/4" (6 mm)

Performance rated @ 90 psig (6.2 bar) air pressure

Tools available with BSPT air inlet upon request

Standard Equipment:

Parts list, Safety and Instruction manual

Comfort Grip

Suspension Bail

DRILLS

ASSEMBLY

ABRASIVE

FINISHING

PERCUSSIVE

SPECIALTY

ACCESSORIES



SAFETY Precaution: Read and follow all safety and operating instructions.

WARNING: Face & eye protection must be worn while operating power tools



DRILLS

ADJUSTABLE CLUTCH PISTOL GRIP SCREWDRIVERS

Performance:

Torque: 45 in. lb (5.1 Nm) - 120 in. lb (14 Nm)

Speed: 700 rpm - 2500 rpm

Screw size: #10 - 1/4" (M6)



2P2305Q

ASSEMBLY

Features:

Reversible

Trigger Start

Trigger or Rapid Reverse



1OM2105Q

ABRASIVE



FINISHING

Model Number		Screw Capacity ¹		Maximum Torque (Soft Joint)		Free Speed	Weight		Length		Side To Center		Sound Level
1/4" QC ²	1/4" IH ³	in.	mm	in. lb	Nm	rpm	lb	kg	in.	mm	in.	mm	dB(A)
Trigger Start - Rapid Reverse													
1OM2105Q		#10	M5	50	5.7	725	2.1	1.0	8.8	224	0.7	17	75
Trigger Start - Trigger Reverse													
2P2305Q	2P2305	#10	M4	45	5.1	2500	2.9	1.3	8.1	206	0.9	23	82
2P2205Q		1/4	M6	90	10	1200	2.4	1.1	9.3	236	0.9	23	82
2P2105Q	2P2105	1/4	M6	120	14	700	2.4	1.1	9.3	236	0.9	23	82

<p>General: Air Inlet Size: 1/4" NPT Recommended Hose Size: 1/4" (6 mm) (1OM series); 3/8" (10 mm) (2P series) Performance rated @ 90 psig (6.2 bar) air pressure Tools available with BSPT air inlet upon request</p>	<p>Standard Equipment: Parts list, Safety and Instruction manual Comfort Grip (1OM series) Clutch Adjustment Wrench</p>
---	---

PERCUSSIVE

¹ Screw capacities are based on suggested assembly torques applied to SAE Grade 5 and metric Class 9.8 fasteners under slightly lubricated conditions
² Quick Change
³ Internal Hex

SPECIALTY

ACCESSORIES



SAFETY Precaution: Read and follow all safety and operating instructions.



WARNING: Face & eye protection must be worn while operating power tools

ADJUSTABLE CLUTCH INLINE AND Z-HANDLE SCREWDRIVERS

Performance:

Torque: 45 in. lb (5.1 Nm) - 120 in. lb (14 Nm)

Speed: 700 rpm - 2500 rpm

Screw size: #10 - 1/4" (M6)

Features:

Reversible

Rear Exhaust

External Clutch Adjustment



Model Number	Screw Capacity ¹		Maximum Torque (Soft Joint)		Free Speed rpm	Weight		Length		Side To Center		Sound Level dB(A)
	in.	mm	in. lb	Nm		lb	kg	in.	mm	in.	mm	
Inline - Lever Start												
1SM2105Q	#10	M5	50	5.7	800	1.8	3.6	10.3	262	0.6	15	75
2L2305Q	#10	M4	45	5.1	2500	3.0	1.4	11.4	290	0.9	23	84
2L2105Q	1/4	M6	120	14	700	3.4	1.5	12.6	320	0.9	23	84

General:

Air Inlet Size: 1/4" NPT

Recommended Hose Size: 1/4" (6 mm) (1SM series); 3/8" (10 mm) (2L series)

Performance rated @ 90 psig (6.2 bar) air pressure

Tools available with BSPT air inlet upon request

Standard Equipment::

Parts list, Safety and Instruction manual

Comfort Grip (1SM series)

Suspension Bail

Clutch Adjustment Wrench

¹ Screw capacities are based on suggested assembly torques applied to SAE Grade 5 and metric Class 9.8 fasteners under slightly lubricated conditions

² Quick Change



SAFETY Precaution: Read and follow all safety and operating instructions.

WARNING: Face & eye protection must be worn while operating power tools



DRILLS

ASSEMBLY

ABRASIVE

FINISHING

PERCUSSIVE

SPECIALTY

ACCESSORIES

DRILLS

TORQUE CONTROL SCREWDRIVERS

Performance:

Torque: 5.0 in. lb (0.6 Nm) - 50 in. lb (5.5 Nm)
 Speed: 725 rpm - 2800 rpm
 Screw size: #6 - #10



1ST2108

ASSEMBLY

Features:

Push-to-start
 Reversible
 Locking Button Reverse
 External Clutch Adjustment



1OT2108Q

ABRASIVE



FINISHING

Model Number		Screw Capacity ¹		Torque Range (Soft Joint)		Free Speed	Weight		Length		Side To Center		Sound Level
1/4" QC ²	1/4" IH ³	in.	mm	in. lb	Nm	rpm	lb	kg	in.	mm	in.	mm	dB(A)
Inline - Push To Start													
1ST2508Q		#6	M3	5.0-14	0.6-1.5	2800	1.4	0.6	8.3	211	0.6	15	75
1ST2308Q		#8	M4	5.0-25	0.6-3.0	1500	1.6	0.7	9.3	236	0.6	15	75
1ST2208Q		#10	M4	5.0-35	0.6-4.0	1100	1.6	0.7	9.3	236	0.6	15	75
1ST2108Q	1ST2108	#10	M5	5.0-50	0.6-5.5	800	1.6	0.7	9.3	236	0.6	15	75
Pistol Grip - Push To Start													
1OT2508Q		#6	M3	5.0-14	0.6-1.5	2600	1.9	0.9	7.8	200	0.7	17	75
1OT2108Q		#10	M5	5.0-50	0.6-5.5	725	2.1	1.0	8.8	225	0.7	17	75

<p>General: Air Inlet Size: 1/4" NPT Recommended Hose Size: 1/4" (6 mm) Performance rated @ 90 psig (6.2 bar) air pressure Tools available with BSPT air inlet upon request</p>	<p>Standard Equipment: Parts list, Safety and Instruction manual Comfort Grip Suspension Bail (Inline models)</p>
--	---

PERCUSSIVE

¹ Screw capacities are based on suggested assembly torques applied to SAE Grade 5 and metric Class 9.8 fasteners under slightly lubricated conditions
² Quick Change
³ Internal Hex

SPECIALTY

ACCESSORIES



SAFETY Precaution: Read and follow all safety and operating instructions.



WARNING: Face & eye protection must be worn while operating power tools

DIRECT CLUTCH SCREWDRIVERS

Performance:

Torque: 70 in. lb (7.9 Nm)

Speed: 2000 rpm



2P2601

Features:

Pistol Grip

Trigger Start

Reversible



Model Number	Maximum Torque (Soft Joint)		Free Speed rpm	Weight		Length		Side To Center		Sound Level dB(A)
	in. lb	Nm		lb	kg	in.	mm	in.	mm	
1/4" Internal Hex										
Pistol Grip - Trigger Start - Trigger Reverse										
2P2601	70	7.9	2000	2.6	1.2	6.8	173	0.9	23	82

General:

Air Inlet Size: 1/4" NPT

Recommended Hose Size: 3/8" (10 mm)

Performance rated @ 90 psig (6.2 bar) air pressure

Tools available with BSPT air inlet upon request

Standard Equipment:

Parts list, Safety and Instruction manual

DRILLS

ASSEMBLY

ABRASIVE

FINISHING

PERCUSSIVE

SPECIALTY

ACCESSORIES



SAFETY Precaution: Read and follow all safety and operating instructions.

WARNING: Face & eye protection must be worn while operating power tools



DRILLS

RIGHT ANGLE NUTRUNNERS

Performance:

Torque: 50 in. lb (5.7 Nm) - 240 in. lb (27 Nm)

Speed: 250 rpm - 800 rpm

Bolt Size: #10 - 3/8" (M10)



1AM2106

ASSEMBLY

Features:

Reversible

Lever Start

Rear and Side Exhaust



NR2A2108BTC

ABRASIVE



Model Number	Bolt Capacity ¹		Maximum Torque (Soft Joint)		Free Speed	Weight		Length		Side To Center		Sound Level	Drive Size	
	in.	mm	in. lb	Nm	rpm	lb	kg	in.	mm	in.	mm	dB(A)	in.	mm
Torque Control Clutch														
NR2A2108BTC	3/8	M10	240	27	250	4.7	2.1	15.1	384	1.0	25	80	3/8	10
Adjustable Clutch														
1AM2106	#10	M4.5	50	5.7	800	1.9	0.9	11.6	295	0.3	8	75	1/4	6

FINISHING

General:

Air Inlet Size: 1/4" NPT

Recommended Hose Size: 1/4" (6 mm) (1AM series);
3/8" (10 mm) (2A series)

Performance rated @ 90 psig (6.2 bar) air pressure

Tools available with BSPT air inlet upon request

Standard Equipment:

Parts list, Safety and Instruction manual

Comfort Grip (1AM series)

Clutch Adjustment Wrench

PERCUSSIVE

¹ Bolt capacities are based on suggested assembly torques applied to SAE Grade 5 and metric Class 9.8 fasteners under slightly lubricated conditions

SPECIALTY

ACCESSORIES



SAFETY Precaution: Read and follow all safety and operating instructions.

WARNING: Face & eye protection must be worn while operating power tools

3/8" (10 mm) AND 1/2" (13 mm) IMPACT WRENCHES

Performance:

Torque: 250 ft lb (340 Nm) - 550 ft lb (745 Nm)

Drive Size: 3/8" (10 mm) - 1/2" (13 mm) square drive

Bolt Capacity: 3/8" (10 mm) - 5/8" (16 mm)

Features:

Pistol Grip

Steel Anvil Housing

Suspension Bail



Model Number	Drive Size		Bolt Cap. Grade 5		Working Torque Range*		Maximum Torque		Blows per Minute	Free Speed rpm	Weight		Length		Side To Center		Avg Air Consump.		Socket Retainer Style
	in.	mm	in.	mm	ft lb	Nm	ft lb	Nm			lb	kg	in.	mm	in.	mm	scfm	l/s	
Pistol Grip																			
IW38HAP-3P	3/8	10	3/8	10	60-200	80-270	250	340	1380	10,000	3.3	1.5	6.7	170	1.1	28	2	1	Pin
IW38HAP-4P	1/2	13	3/8	10	60-200	80-270	250	340	1380	10,000	3.3	1.5	6.7	170	1.1	28	2	1	Pin
IW50HAP-4P	1/2	13	5/8	16	100-450	135-610	550	745	1140	7000	4.3	1.95	7.6	192	1.3	33	4	1.8	Pin

General:

Air Inlet Size: 1/4" NPT

Recommended Hose Size: 3/8" (10 mm)

Performance rated @ 90 psig (6.2 bar) air pressure

Tools available with BSPT air inlet upon request

Standard Equipment:

Parts list, Safety and Instruction manual

Suspension Bail

* Maximum working torque determined by 5 second rundown on appropriate Skidmore-Wilhelm Torque-Tension Tester



SAFETY Precaution: Read and follow all safety and operating instructions.

WARNING: Face & eye protection must be worn while operating power tools



DRILLS

ASSEMBLY

ABRASIVE

FINISHING

PERCUSSIVE

SPECIALTY

ACCESSORIES

DRILLS

**3/4" (19 mm), 1" (25 mm)
IMPACT WRENCHES**

Performance:

Torque: 800 ft lb (1085 Nm) - 825 ft lb (1119 Nm)
 Drive Size: 3/4" (19 mm) - 1" (25 mm) Square Drive & #5 Splines
 Bolt Capacity: 3/4" (19 mm)



IW75BP-6H

ASSEMBLY

Features:

Pistol Grip
 Steel Anvil Housing

ABRASIVE



Model Number	Drive Size		Bolt Cap. Grade 5		Max. Working Torque*		Maximum Torque		Blows per Minute	Free Speed rpm	Weight		Length		Side To Center		Avg Air Consump.		Socket Retainer Style
	in.	mm	in.	mm	ft lb	Nm	ft lb	Nm			lb	kg	in.	mm	in.	mm	scfm	l/s	
Pistol Grip																			
IW75BP-6H	3/4	19	3/4	19	800	1085	1000	1356	1000	5700	11.6	5.3	7.6	193	1.75	45	15	7	Hole
IW75BP-8H	1	25	3/4	19	825	1119	1100	1492	1000	5700	11.7	5.3	7.6	193	1.75	45	15	7	Hole

General:

Air Inlet Size: 3/8" NPT
 Recommended Hose Size: 1/2" (13 mm)
 Performance rated @ 90 psig (6.2 bar) air pressure
 Tools available with BSPT air inlet upon request

Standard Equipment:

Parts list, Safety and Instruction manual
 Suspension Bail

* Maximum working torque determined by 5 second rundown on appropriate Skidmore-Wilhelm Torque-Tension Tester

FINISHING

PERCUSSIVE

SPECIALTY

ACCESSORIES



SAFETY Precaution: Read and follow all safety and operating instructions.

WARNING: Face & eye protection must be worn while operating power tools



ABRASIVE

ABRASIVE



Index
Grinders 30 - 31

DRILLS

STRAIGHT DIE GRINDERS

Performance:

Power: 0.33 hp (0.25 kw) - 0.75 hp (0.55 kw)
 Speed: 18,000 rpm - 25,000 rpm
 Collet Size: 6 mm - 8 mm



1954HPM6

ASSEMBLY

Features:

Lockoff Lever & Twist Throttle
 Front, Rear, Side, and Vacuum Exhaust
 Built-in Speed Control



1956HPEXTM6

ABRASIVE



FINISHING

Model Number	Free Speed	Weight		Length		Sound Level	Air Consumption		Collet Size	Exhaust
		lb	kg	in.	mm		cfm	l/s		
0.33 hp (0.25 kw) - Lever Throttle										
1DS111	25,000	0.9	0.4	6.0	150	84	17	8	1/4"	Front
1DS121	25,000	0.9	0.4	6.0	150	78	17	8	1/4"	Rear
0.75 hp (0.55 kw) - Lever Throttle										
1954HPM6	23,000	1.4	0.6	6.5	165	82	30	14	6 mm	Front
1955HPM8	23,000	1.4	0.6	6.5	165	82	30	14	8 mm	Front
1956HPM6	18,000	1.4	0.6	6.5	165	84	30	14	6 mm	Front
0.75 hp (0.55 kw) - Lever Throttle - Extended										
1956HPEXTM6	18,000	2.0	0.9	11.6	294	84	30	14	6 mm	Front

PERCUSSIVE

General:
 Air Inlet Size: 1/4" NPT
 Recommended Hose Size: 3/8" (10 mm)
 Performance rated @ 90 psig (6.2 bar) air pressure
 Tools available with BSPT air inlet upon request

Standard Equipment:
 Parts list, Safety and Instruction manual
 Collet & Wrenches
 Collet Guard (1DS Series)

To order tools with 3 mm or 6 mm collet, add M3 or M6 suffix to model number

SPECIALTY

ACCESSORIES



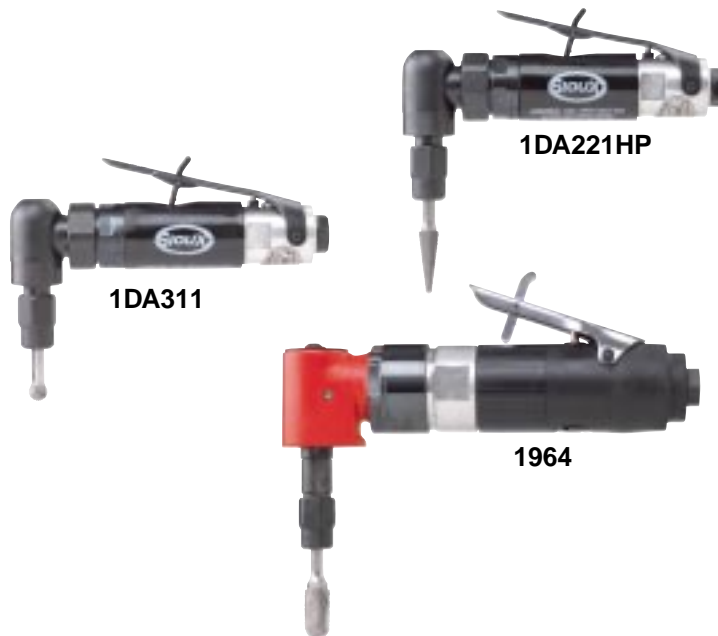
RIGHT ANGLE DIE GRINDERS

Performance:

Power: 0.33 hp (0.25 kw)
 Speed: 12,000 rpm - 20,000 rpm
 Collet Size: 1/4" and 6 mm

Features:

Lockoff Lever
 Front & Rear Exhaust
 Built-in Speed Control



Model Number	Free Speed	Weight		Length		Sound Level dB(A)	Air Consumption		Collet Size	Exhaust
	rpm	lb	kg	in.	mm		cfm	l/s		
0.33 hp (0.25 kw) - Lever Throttle										
1DA211	20,000	1.2	0.5	6.0	152	87	17	8	1/4"	Front
1DA221HP	20,000	1.2	0.5	6.0	152	82	17	8	1/4"	Rear
1DA221M6	20,000	1.2	0.5	6.0	152	82	17	8	6 mm	Rear
1DA321M6	12,000	1.2	0.5	6.0	152	82	17	8	6 mm	Rear

<p>General: Air Inlet Size: 1/4" NPT Recommended Hose Size: 3/8" (10 mm) Performance rated @ 90 psig (6.2 bar) air pressure Tools available with BSPT air inlet upon request</p>	<p>Standard Equipment: Parts list, Safety and Instruction manual Collet & Wrenches</p>
---	---

To order tools with 3 mm or 6 mm collet, add M3 or M6 suffix to model number

DRILLS

ASSEMBLY

ABRASIVE

FINISHING

PERCUSSIVE

SPECIALTY

ACCESSORIES



SAFETY Precaution: Read and follow all safety and operating instructions.
WARNING: Face & eye protection must be worn while operating power tools





FINISHING



FINISHING



Index

Sanders 34 - 36

SIGNATURE SERIES RANDOM ORBITAL SANDERS

Performance:

Power: 0.25 hp (0.19 kw)

Speed: 12,000 rpm

Features:

3/32" (3 mm), 3/16" (5 mm) & 3/8" (10 mm) Orbit Diameters

Built-in Speed Control

Ergonomic 24-Position Indexable Grip

Non-Vacuum, Venturi Vacuum and Remote Vacuum



RO2512-50SRH

RO2512-50SNH



RO2512-50FVH



Model Number	Free Speed	Pad Size		Orbit Diameter		Weight		Height		Air Consumption		Sound Level
	rpm	in.	mm	in.	mm	lb	kg	in.	mm	cfm	l/s	dB(A)
.025 hp (0.19 kw) - 5/16"-24 Spindle Thread-Non-Vacuum												
RO2512-50FNH	12,000	5	125	3/32	3	1.5	0.7	3.26	83	13	6	81
RO2512-50SNH	12,000	5	125	3/16	5	1.5	0.7	3.26	83	13	6	81
RO2512-50CNH	12,000	5	125	3/8	10	1.5	0.7	3.26	83	13	6	81
RO2512-60FNH	12,000	6	150	3/32	3	1.5	0.7	3.26	83	13	6	81
RO2512-60SNH	12,000	6	150	3/16	5	1.5	0.7	3.26	83	13	6	81
RO2512-60CNH	12,000	6	150	3/8	10	1.5	0.7	3.26	83	13	6	81
.025 hp (0.19 kw) - 5/16"-24 Spindle Thread-Remote-Vacuum												
RO2512-50FRH	12,000	5	125	3/32	3	1.5	0.7	3.26	83	13	6	81
RO2512-50SRH	12,000	5	125	3/16	5	1.5	0.7	3.26	83	13	6	81
RO2512-50CRH	12,000	5	125	3/8	10	1.5	0.7	3.26	83	13	6	81
RO2512-60FRH	12,000	6	150	3/32	3	1.5	0.7	3.26	83	13	6	81
RO2512-60SRH	12,000	6	150	3/16	5	1.5	0.7	3.26	83	13	6	81
RO2512-60CRH	12,000	6	150	3/8	10	1.5	0.7	3.26	83	13	6	81
.025 hp (0.19 kw) - 5/16"-24 Spindle Thread-Venturi-Vacuum												
RO2512-50FVH	12,000	5	125	3/32	3	1.5	0.7	3.26	83	13	6	81
RO2512-50SVH	12,000	5	125	3/16	5	1.5	0.7	3.26	83	13	6	81
RO2512-50CVH	12,000	5	125	3/8	10	1.5	0.7	3.26	83	13	6	81
RO2512-60FVH	12,000	6	150	3/32	3	1.5	0.7	3.26	83	13	6	81
RO2512-60SVH	12,000	6	150	3/16	5	1.5	0.7	3.26	83	13	6	81
RO2512-60CVH	12,000	6	150	3/8	10	1.5	0.7	3.26	83	13	6	81

<p>General: Air Inlet Size: 1/4" NPT Recommended Hose Size: 3/8" (10 mm) Performance rated @ 90 psig (6.2 bar) air pressure Tools available with BSPT air inlet upon request</p> <p>Standard Equipment: Parts list, Safety and Instruction manual Comfort Grip Backing Pad & Wrench H & L (Hook and Loop)</p>	<p>Accessories: Sander Accessories, see page 36</p>
---	---

DRILLS

ASSEMBLY

ABRASIVE

FINISHING

PERCUSSIVE

SPECIALTY

ACCESSORIES



SAFETY Precaution: Read and follow all safety and operating instructions.

WARNING: Face & eye protection must be worn while operating power tools



1/3 HP RIGHT ANGLE SANDERS

Performance:

Power: 0.33 hp (0.25 kw)

Speed: 12,000 rpm - 20,000 rpm

Features:

Lockoff Lever Throttle

Front, Rear, and Vacuum Exhaust

Comfort Grip



1DA211



Model Number	Free Speed	Weight		Length		Air Consumption Free Speed		Sound Level	Exhaust
	rpm	lb	kg	in.	mm	cfm	l/s	dB(A)	
0.33 hp (0.25 kw) - 1/4" and 6 mm Collets									
1DA211	20,000	1.2	0.5	6.0	152	17	8	87	Front
1DA221HP	20,000	1.2	0.5	6.0	152	17	8	82	Rear
1DA221M6	20,000	1.2	0.5	6.0	152	17	8	82	Rear
1DA321M6	12,000	1.2	0.5	6.0	152	17	8	82	Rear

<p>General: Air Inlet Size: 1/4" NPT Recommended Hose Size: 3/8" (10 mm) Performance rated @ 90 psig (6.2 bar) air pressure Tools available with BSPT air inlet upon request</p>	<p>Standard Equipment: Parts list, Safety and Instruction manual Comfort Grip Collet & Collet Wrenches (as required) Angle Head Lubricant</p>
---	--

To order tool with 6 mm collet, add M6 suffix to model number



SAFETY Precaution: Read and follow all safety and operating instructions.
WARNING: Face & eye protection must be worn while operating power tools



DRILLS

ASSEMBLY

ABRASIVE

FINISHING

PERCUSSIVE

SPECIALTY

ACCESSORIES

Orbital Sander Backing Pads

Sioux random orbital backing pads are medium density, urethane pads rated for speeds up to 13,000 rpm. The 5" pads are a 3/8" thick with low profile design, while the 6" pads are 5/8" thick with tapered profile for fine feathering in corners or around edges.



593



593V

5/16" - 24 Spindle Thread



594



594V

Part Number	Diameter		Backing	Profile	Style
	in.	mm			
593	5	125	PSA ¹	Low	Non-Vac
593V	5	125	PSA ¹	Low	Vacuum
593J	5	125	H&L ²	Low	Non-Vac
593JV	5	125	H&L ²	Low	Vacuum
594	6	150	PSA ¹	Tapered	Non-Vac
594V	6	150	PSA ¹	Tapered	Vacuum
594J	6	150	H&L ²	Tapered	Non-Vac
594JV	6	150	H&L ²	Tapered	Vacuum

¹PSA - Vinyl face for pressure sensitive adhesive sanding discs
²H&L - Hook and loop face



SAFETY Precaution: Read and follow all safety and operating instructions.

WARNING: Face & eye protection must be worn while operating power tools



SPECIALTY

SPECIALTY



Index

Routers	38
Tappers	39
Clinch Nut Tools	40
Rivet Shavers	41
Skin Clamp Runners	42
Shears	43
Compression Riveters	44 - 47
Pneumatic Saws	48
Specialty Accessories	49



DRILLS

ROUTERS

Performance:

Power: 0.75 hp (0.56 kw)

Speed: 18,000 rpm - 23,000 rpm

Collet Size: 1/4"

ASSEMBLY

Features:

Lockoff Lever Throttle

Front Exhaust

Interchangeable Base

Built-in Speed Control

ABRASIVE



FINISHING

Model Number	Collet Size	Free Speed	Weight		Height		Base Diameter		Air Consumption		Sound Level
		rpm	lb	kg	in.	mm	in.	mm	cfm	l/s	dB(A)
1971HP	1/4"	23,000	2.8	1.3	8.5	215	3.5	90	27	13	82
1971HPB	1/4"	23,000	2.8	1.3	6.5	165	3.0	75	27	13	82
1971HPD	1/4"	23,000	2.8	1.3	6.5	165	4.0	100	27	13	82
Template Head - Standard Lever											
RT8AKS-23N	1/4" / 6mm	23,000	1.8	0.8	7.4	190	-	-	27	13	84
Template Head - Lockoff Lever											
RT8AKS-18N	1/4" / 6mm	18,000	1.8	0.8	7.4	190	-	-	27	13	84

PERCUSSIVE

General:
 Air Inlet Size: 1/4" NPT
 Recommended hose size: 3/8" (10 mm)
 Tool performance rated at 90 psig (6.2 bar) air pressure
 Tools available with BSPT air inlet upon request

Standard Equipment:
 Parts list, Safety and Instruction manual
 Base/Head Assembly, Collet, Collet Wrenches

Template guides must be ordered separately.
 Tools are shipped standard with Sioux collet.

SPECIALTY

ACCESSORIES



SAFETY Precaution: Read and follow all safety and operating instructions.



WARNING: Face & eye protection must be worn while operating power tools

TAPPERS**Performance:**

Power: 0.9 hp (0.7 kw)

Torque: 310 in. lb (35 Nm)

Speed: 400 rpm

Features:

Pistol Grip Handles

Rapid Reverse



TP9A-4C20



Model Number	Tap Capacity		Maximum Torque (Soft Joint)		Free Speed rpm	Weight		Length		Air Consumption		Sound Level dB(A)
	in.	mm	in. lb	Nm		lb	kg	in.	mm	cfm	l/s	
0.9 hp (0.7 kw) - Pistol Grip - Trigger Start												
TP9A-4C20	#10-5/16	5-8	310	35	400	2.8	1.3	8.3	211	30	14	78
TP9A-4C32	1/4-1/2	6-13	310	35	400	2.8	1.3	8.3	211	30	14	78

General:

Air Inlet Size: 1/4" NPT

Recommended Hose Size: 3/8" (10 mm)

Performance rated @ 90 psig (6.2 bar) air pressure

Tools available with BSPT air inlet upon request

Inline models do not include chuck

Standard Equipment:

Parts list, Safety and Instruction manual

Comfort Grip

Tapping Chuck



SAFETY Precaution: Read and follow all safety and operating instructions.

WARNING: Face & eye protection must be worn while operating power tools

DRILLS

ASSEMBLY

ABRASIVE

FINISHING

PERCUSSIVE

SPECIALTY

ACCESSORIES

CLINCH NUT TOOLS

Performance:

Torque: 55 in. lb (6 Nm) - 350 in. lb (40 Nm)

Speed: 400 rpm - 2500 rpm

Features:

Reversible

Pistol Grip, Inline



CN9P



CN9L



Base Model Number	Free Speed	Maximum Torque		Weight		Length		Side To Center		Maximum Air Consumption		Sound Level
	rpm	in. lb	Nm	lb	kg	in.	mm	in.	mm	scfm	l/s	dB(A)
Pistol Grip												
CN9P4	400	350	40	3.4	1.6	10.4	265	1.8	145	30	14	78
CN9P7	700	200	23	3.4	1.6	10.4	265	1.8	145	30	14	78
CN9P12	1200	120	14	3.4	1.6	10.4	265	1.8	145	30	14	78
CN9P25	2500	55	6	2.9	1.3	9.0	230	1.8	145	30	14	78
Inline												
CN9L4	400	325	37	3.3	1.5	11.9	300	1.8	145	30	14	78
CN9L7	700	185	21	3.3	1.5	11.9	300	1.8	145	30	14	78
CN9L12	1200	105	12	3.3	1.5	11.9	300	1.8	145	30	14	78
CN9L20	2000	70	8	2.8	1.3	10.7	290	1.8	145	30	14	78
CN9L25	2500	55	6	2.8	1.3	10.7	290	1.8	145	30	14	78

General:

Air Inlet: 1/4" NPT
 Recommended Hose Size: 3/8" (10 mm)
 Performance rated @ 90 psig (6.2 bar) air pressure
 Tools available with BSPT air inlet upon request

Standard Equipment:

Parts List, Safety & Instruction Manual
 Comfort Grip (Pistol Grip Models)

Power units can be ordered separately using part number above. For ordering complete tools select the appropriate power unit from the chart above and head assembly from the chart below and combine their part numbers as shown in the following example: CN9BP-4-420.

Clinch Nut (female)



Thread Size	Order Number Suffix	
	Serrated Nose	Smooth Nose
#4-40	440	440S
M3 x 0.5	M305	M305S
#6-32	632	632S
#8-32	832	832S
M4 x 0.7	M407	M407S
#10-24	1024	1024S
#10-32	1032	1032S
M5 x 0.8	M508	M508S
1/4-20	420	420S
M6 x 1.0	M610	M610S
5/16-18	518	518S
M8 x 1.25	M8125	M8125S
3/8-16	616	616S
M10 x 1.5	M1015	M1015S

Clinch Stud (male)



Thread Size	Order Number Suffix	
	Serrated Nose	Smooth Nose
#4-40	440F	440SF
M3 x 0.5	M305F	M305SF
#6-32	632F	632SF
#8-32	832F	832SF
M4 x 0.7	M407F	M407SF
#10-24	1024F	1024SF
#10-32	1032F	1032SF
M5 x 0.8	M508F	M508SF
1/4-20	420F	420SF
M6 x 1.0	M610F	M610SF
5/16-18	518F	518SF
M8 x 1.25	M8125F	M8125SF
3/8-16	616F	616SF
M10 x 1.5	M1015F	M1015SF

Head assemblies can be ordered separately by adding the prefix CNK to the above number, example: CNK-420.

SAFETY Precaution: Read and follow all safety and operating instructions.



WARNING: Face & eye protection must be worn while operating power tools



RIVET SHAVERS

Performance:

Power: 0.75 hp (0.56 kw)

Speed: 21,000 rpm

Features:

Pistol Grip



RS9A-210-8



Model Number	Cutter Diameter		Free Speed	Weight		Length		Side to Center		Maximum Air Consumption		Sound Level
	in.	mm	rpm	lb	kg	in.	mm	in.	mm	cfm	l/s	dB(A)
0.75 hp (0.56 kw) - Pistol Grip - 1/4"-28 Internal Thread												
RS9A-210-8	1/2	13	21,000	3.0	1.4	8.2	208	0.9	23	30	14	78

General:

Air Inlet Size: 1/4" NPT
 Recommended Hose Size: 3/8" (10 mm)
 Performance rated @ 90 psig (6.2 bar) air pressure
 Tools available with BSPT air inlet upon request

Standard Equipment:

Parts list, Safety and Instruction manual
 Skirt
 Comfort Grip

DRILLS

ASSEMBLY

ABRASIVE

FINISHING

PERCUSSIVE

SPECIALTY

ACCESSORIES



SAFETY Precaution: Read and follow all safety and operating instructions.
WARNING: Face & eye protection must be worn while operating power tools



DRILLS

SKIN CLAMP RUNNERS

Performance:

Speed: 2200 rpm - 2500 rpm

Features:

Pistol Grip and Z-handle

ASSEMBLY

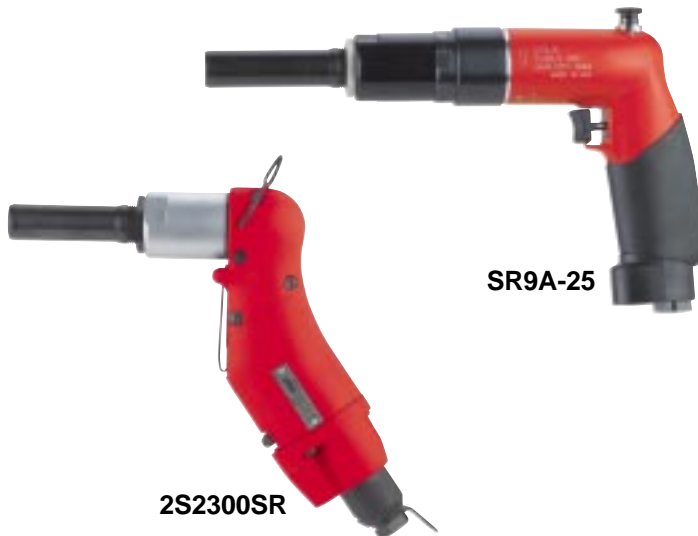
ABRASIVE

FINISHING

PERCUSSIVE

SPECIALTY

ACCESSORIES



2S2300SR

SR9A-25



Model Number	Free Speed	Weight		Length		Side To Center		Maximum Air Consumption		Sound Level
	rpm	lb	kg	in.	mm	in.	mm	cfm	l/s	dB(A)
Z-Handle										
2S2300SR	2200	2.6	1.2	5.7	145	0.9	23	16	8	75
Pistol Grip										
SR9A-25	2500	2.7	1.2	9.2	234	0.9	23	30	14	78

General:

Air Inlet Size: 1/4" NPT
 Recommended Hose Size: 3/8" (10 mm)
 Performance rated @ 90 psig (6.2 bar) air pressure
 Tools available with BSPT air inlet upon request

Standard Equipment:

Parts list, Safety and Instruction manual
 Comfort Grip (Pistol Grip Models)



SAFETY Precaution: Read and follow all safety and operating instructions.

WARNING: Face & eye protection must be worn while operating power tools



SHEARS

Performance:

Power: 0.75 hp (0.56 kw) & 0.90 hp (0.67 kw)

Capacity: 18 Gauge Cold Rolled Steel



1446ES



Model Number	Capacity (Cold Rolled Steel)	Power		Weight		Length		Side To Center		Maximum Air Consumption		Sound Level
		hp	kw	lb	kg	in.	mm	in.	mm	cfm	l/s	dB(A)
Shears												
1446ES	18 Ga	0.90	0.67	2.9	1.3	8.0	203	0.9	23	25	12	78

General:

Air Inlet Size: 1/4" NPT
 Recommended Hose Size: 3/8" (10 mm)
 Performance rated @ 90 psig (6.2 bar) air pressure
 Tools available with BSPT air inlet upon request

Standard Equipment:

Parts list, Safety and Instruction manual
 Comfort Grip

DRILLS

ASSEMBLY

ABRASIVE

FINISHING

PERCUSSIVE

SPECIALTY

ACCESSORIES



SAFETY Precaution: Read and follow all safety and operating instructions.

WARNING: Face & eye protection must be worn while operating power tools



Compression Riveters

Principle of Operation:

Air powered compression riveters deliver a squeezing action, which drives the rivet by “flowing” the rivet metal with compressed forces. Squeezing action is obtained by coupling an air cylinder and piston to a wedge or cam, thus multiplying the original force to extreme ratios. High compressive forces are obtained from a relatively compact unit having small diameter cylinders and using very little compressed air.

The advantage of squeeze riveting is simple sounds of air exhaust and forward piston movement developing tremendous pressures being exerted at the work point.

Optimum control may be obtained in compression riveting. The rivet head is formed by a steady, uniform squeeze action. The set plunger and dolly are an integral part of the squeezer itself.

Classification of Squeezers:

Alligator: The squeezing action of the jaws are similar to the movement of an Alligators jaws.

‘C’ Type: The rivet is squeezed between the two ends of the ‘C’.

Type of Rivet:

- Rivet material.
- Rivet body diameter.
- Rivet length before and after compression.
- Force required to compress rivet.

What material is the rivet made from?

What size is the rivet?

What is the form of the head?

What components are being assembled?

Are there any clearance problems?

Is Alligator or ‘C’ type yoke required?

How is the application being done now?

Are there any special considerations?



COMPRESSION RIVETERS

Single, Tandem and Triple cylinder options

Riveting capacity:

1/8" (3 mm) (single cylinder)

3/16" (5 mm) (tandem cylinder)

1/4" (6 mm) (triple cylinder)

Safety throttle



SZE A5030



SZE A7030



SZE A9030

Model Number	Rivet Set Shank Diameter		Cap. Cold Rivet Diameter				Std. Alligator Yoke Dim.				Max Force at 90 psi		Moving Jaw				Net Weight w/Yoke		Overall Length	
			Alum.		Steel		Reach		Closed Ht.				Max Travel		Stroke at max Force					
	in.	mm	in.	mm	in.	mm	in.	mm	in.	mm	lb	kN	in.	mm	in.	mm	lb	kg	in.	mm
CR-1 Single Cylinder																				
SZE A5000	NA	NA	1/8	3	3/32	2	NA	NA	NA	NA	3000	13.4	5/8	16	final 1/16	2	2-1/4	1.0	7-11/16	195
SZE A5015	3/16	5	1/8	3	3/32	2	1-1/2	38	7/8	22	3000	13.4	5/8	16	final 1/16	2	3.75	1.7	9-3/16	233
SZE A5022	3/16	5	3/32	2	3/32	2	2-1/4	57	7/8	22	2200	9.8	7/8	22	final 3/32	2	4.25	1.9	10-1/8	257
SZE A5030	3/16	5	3/32	2	3/32	2	3	76	7/8	22	1800	8.0	1-1/4	32	final 1/8	3	4.75	2.2	10-7/8	276
CR-2																				
SZE A50152	1/4	6	1/8	3	3/32	2	1-1/2	38	7/8	22	3000	13.4	5/8	16	final 1/16	2	3.75	1.7	9-3/16	233
SZE A50222	1/4	6	3/32	2	3/32	2	2-1/4	57	7/8	22	2200	9.8	7/8	22	final 3/32	2	4.25	1.9	10-1/8	257
SZE A50302	1/4	6	3/32	2	3/32	2	3	76	7/8	22	1800	8.0	1-1/4	32	final 1/8	3	4.75	2.2	10-7/8	276
CR-1 Tandem Cylinder																				
SZE A7000	NA	NA	3/16	5	5/32	4	NA	NA	NA	NA	6000	26.7	5/8	16	final 1/16	2	4	1.8	10-1/2	267
SZE A7015	3/16	5	3/16	5	5/32	4	1-1/2	38	7/8	22	6000	26.7	5/8	16	final 1/16	2	5.5	2.5	12	305
SZE A7022	3/16	5	5/32	4	1/8	3	2-1/4	57	7/8	22	4300	19.1	7/8	22	final 3/32	2	6	2.7	13	330
SZE A7030	3/16	5	1/8	3	3/32	2	3	76	7/8	22	3400	15.1	1-1/4	32	final 1/8	3	6.25	2.8	13.75	349
CR-2																				
SZE A70152	1/4	6	3/16	5	5/32	4	1-1/2	38	7/8	22	6000	26.7	5/8	16	final 1/16	2	5.5	2.5	12	305
SZE A70222	1/4	6	5/32	4	1/8	3	2-1/4	57	7/8	22	4300	19.1	7/8	22	final 3/32	2	6	2.7	13	330
SZE A70302	1/4	6	1/8	3	3/32	2	3	76	7/8	22	3400	15.1	1-1/4	32	final 1/8	3	6.25	2.8	13.75	349
CR-1 Triple Cylinder																				
SZE A9000	NA	NA	1/4	6	3/16	5	NA	NA	NA	NA	9000	40.1	5/8	16	final 1/16	2	5.5	2.5	14.5	368
SZE A9015	3/16	5	1/4	6	3/16	5	1-1/2	38	7/8	22	9000	40.1	5/8	16	final 1/16	2	7	3.2	16	406
SZE A9022	3/16	5	3/16	5	5/32	4	2-1/4	57	7/8	22	7000	31.2	7/8	22	final 3/32	2	7.5	93.4	16.75	426
SZE A9030	3/16	5	3/16	5	5/32	4	3	76	7/8	22	5200	23.1	1-1/4	32	final 1/8	3	8	3.6	17.5	445
CR-2																				
SZE A90152	1/4	6	1/4	6	3/16	5	1-1/2	38	7/8	22	9000	40.1	5/8	16	final 1/16	2	7	3.2	16	406
SZE A90222	1/4	6	3/16	5	5/32	4	2-1/4	57	7/8	22	7000	31.2	7/8	22	final 3/32	2	7.5	93.4	16.75	426
SZE A90302	1/4	6	3/16	5	5/32	4	3	76	7/8	22	5200	23.1	1-1/4	32	final 1/8	3	8	3.6	17.5	445

General:

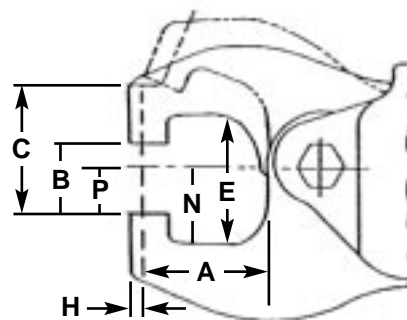
Air Inlet Size: 1/4" NPT
 Recommended Hose Size: 3/8" (10 mm)
 Performance rated @ 90 psig (6.2 bar) air pressure
 Tools available with BSPT air inlet upon request

Standard Equipment:

Parts List, Safety and Instruction Manual
 Safety throttle action

ALLIGATOR YOKE NOMENCLATURE

- A Reach
- B Closed Height
- C Total
- E Gap
- H Lower Offset
- N Depth from centerline to Stationary Jaw Gap
- P Depth from centerline to Stationary Jaw set hole surface



A		B		C		E		H		N		P	
in.	mm	in.	mm	in.	mm	in.	mm	in.	mm	in.	mm	in.	mm
1-1/2	38	7/8	22	1-1/2	38	1-5/8	41	7/32	6	1.0	1	5/8	16
2-1/4	57	7/8	22	1-7/8	48	2-1/8	54	7/32	6	1-1/4	32	5/8	16
3.0	76	7/8	22	2-1/8	54	2-1/8	54	7/32	6	1-1/4	32	5/8	16



SAFETY Precaution: Read and follow all safety and operating instructions.
WARNING: Face & eye protection must be worn while operating power tools

DRILLS
 ASSEMBLY
 ABRASIVE
 FINISHING
 PERCUSSIVE
 SPECIALTY
 ACCESSORIES



DRILLS

ASSEMBLY

ABRASIVE

FINISHING

PERCUSSIVE

SPECIALTY

ACCESSORIES

COMPRESSION RIVETERS

Single, Tandem and Triple cylinder options

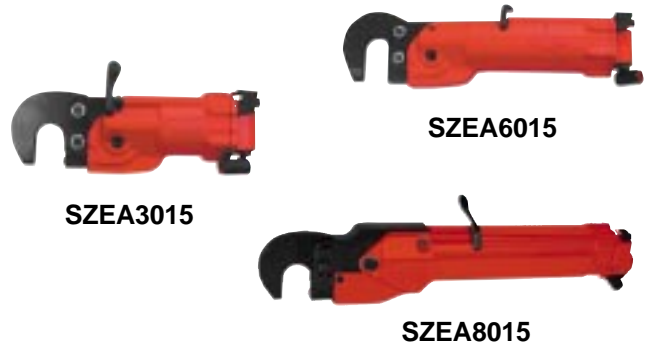
Riveting capacity:

1/8" (3 mm) (single cylinder)

3/16" (5 mm) (tandem cylinder)

1/4" (6 mm) (triple cylinder)

Safety throttle



Model Number	Rivet Set Shank Diameter		Cap. Cold Rivet Diameter				Standard "C" Yoke Dimension				Closed Height		Max Travel		Max Force at 90 psi		Stroke at max Force		Net Weight w/Yoke		Overall Length	
			Steel		Alum.		Reach		Gap													
	in.	mm	in.	mm	in.	mm	in.	mm	in.	mm	in.	mm	in.	mm	lb	kN	in.	mm	lb	kg	in.	mm
CR-1 Single Cylinder																						
SZEA3000	N/A	N/A	3/32	2	1/8	3	N/A	N/A	N/A	N/A	N/A	N/A	9/16	14	3000	13.4	f-1/16	2	3-1/2	1.6	8-1/2	216
SZEA3015	3/16	5	3/32	2	1/8	3	1-1/2	38	1-1/4	32	11/16	78	9/16	14	3000	13.4	f-1/16	2	4-1/2	2.0	10-1/4	262
CR-2																						
SZEA30152	1/4	6	3/32	2	1/8	3	1-1/2	38	1-1/4	32	11/16	78	9/16	14	3000	13.4	f-1/16	2	4-1/2	2.0	10-1/4	262
CR-1 Tandem Cylinder																						
SZEA6000	N/A	N/A	5/32	4	3/16	5	N/A	N/A	N/A	N/A	N/A	N/A	9/16	14	6000	26.7	f-1/16	2	4-1/2	2.0	11-1/4	287
SZEA6015	3/16	5	5/32	4	3/16	5	1-1/2	38	1-1/4	32	11/16	78	9/16	14	6000	26.7	f-1/16	2	5-1/2	2.5	14	356
CR-2																						
SZEA60152	1/4	6	5/32	4	3/16	5	1-1/2	38	1-1/4	32	11/16	78	9/16	14	6000	26.7	f-1/16	2	5-1/2	2.5	14	356
CR-1 Triple Cylinder																						
SZEA8000	N/A	N/A	5/32	4	1/4	6	N/A	N/A	N/A	N/A	N/A	N/A	9/16	14	9000	40.1	f-1/16	2	7-1/2	3.4	16	406
SZEA8015	3/16	5	3/16	5	1/4	6	1-1/2	38	1-1/4	32	11/16	78	9/16	14	9000	40.1	f-1/16	2	8-1/2	3.9	18-3/4	476
CR-2																						
SZEA80152	1/4	6	3/16	5	1/4	6	1-1/2	38	1-1/4	32	11/16	78	9/16	14	9000	40.1	f-1/16	2	8-1/2	3.9	18-3/4	476

General:

Air Inlet Size: 1/4" NPT
 Recommended Hose Size: 3/8" (10 mm)
 Performance rated @ 90 psig (6.2 bar) air pressure
 Tools available with BSPT air inlet upon request

Standard Equipment:

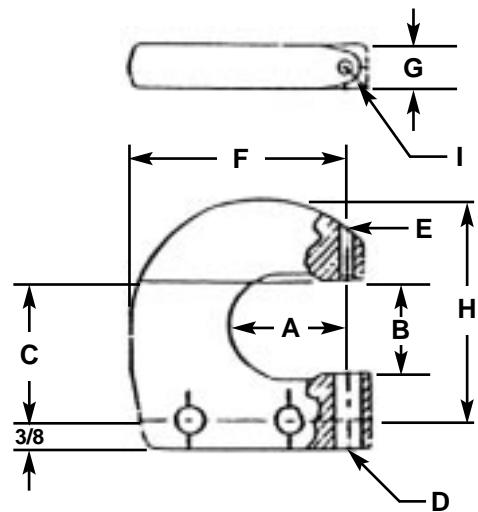
Parts List, Safety and Instruction Manual
 Safety throttle action

Special yokes available upon request.

Due to a variety of jobs and applications, Squeeze Riveters are not supplied with rivet sets.
 Please contact Sioux Tools, Inc. or your local distributor for rivet set information.

G-YOKE NOMENCLATURE

- A Reach
- B Gap
- C Height from yoke hole center to top of yoke gap
- D Bottom set hole diameter CR-1 or CR-2
- E Top set hole diameter CR-1 or CR-2
- F Width of yoke set hole center to end of yoke
- G Thickness of yoke
- H Height of yoke from bolt hole center to top of yoke
- I Radius from set hole center



A		B		C		D		E		F		G		H		I	
in.	mm	in.	mm	in.	mm	in.	mm	in.	mm	in.	mm	in.	mm	in.	mm	in.	mm
1-1/2	38	1-1/4	32	1-7/8	48	3/8	10	3/16	5	2-7/8	73	9/16	14	3.0	76	1/4	6
						7/16	11	1/4	6								

SAFETY Precaution: Read and follow all safety and operating instructions.



WARNING: Face & eye protection must be worn while operating power tools

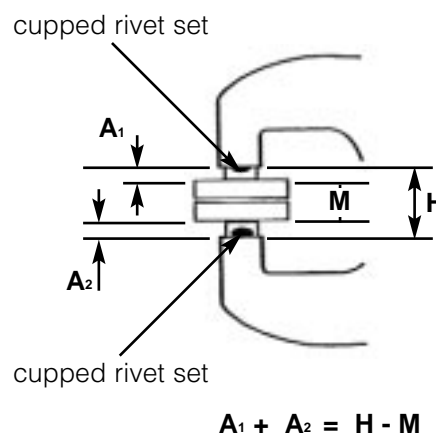


For maximum power the combined length of the two rivet sets must be of the correct length.

Determine the correct lengths as follows:

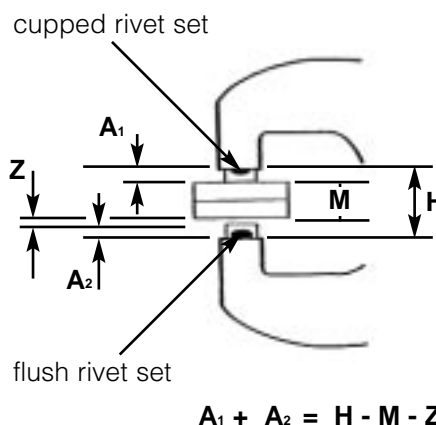
1) When two cupped rivet sets are used:

The length of the body dimensions of the two rivet sets (A1, A2) should equal the closed height dimension of the yoke (H) minus the total thickness of material being riveted together.



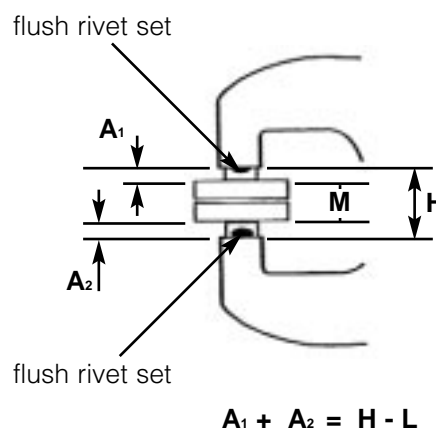
2) When one cupped set and one flush set are used:

The length of the body dimensions of the two rivet sets (A1, A2) should equal the closed height dimension of the yoke H minus the total thickness of material being riveted (M) and the height of the finished rivet head (Z) compressed by the flush set (A).

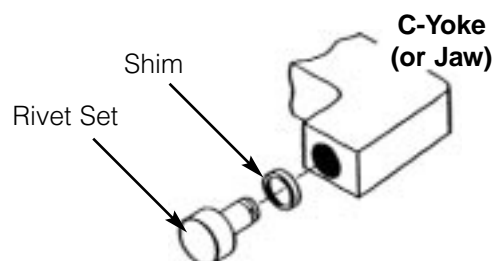


3) When two flush sets are used:

The length of the body dimensions of the two rivet sets (A1, A2) should equal the closed height dimension of the yoke (H) minus the overall length of the rivet (M) after it is compressed.



If necessary, select rivet sets a little short and shim to the correct length using spacer shims.



SAFETY Precaution: Read and follow all safety and operating instructions.
WARNING: Face & eye protection must be worn while operating power tools

Pneumatic Saws and Trim Shears

Principle of Operation for Saws:

Air powered saws SZES100 and SZES101 utilize a geared motor with a mounting spindle extending from the front of the motor.

Depressing lever throttle on handle allows for the operation of the motor to turn the blade surrounded by a protective guard

The SZES600 and SZES600G utilize geared motors and governed motors.

Saw Selection Guide:

- What type of Material?
- What is the material thickness?
- What type of saw blades?
- Are there any blade restrictions? (e.g. maximum rpm rating)
- Are there any special considerations?

PNEUMATIC SAWS

Performance:

- Blade Capacity: 2.0" (51 mm)
- Speed: 2800 - 20,000
- Cutting Capacity: 1/4" (6 mm)

Features:

Non-ferrous and fiberglass



SZES100

SZES101

Model Number	Blade Capacity		Speed rpm	Cutting Capacity Non-ferrous & Fiberglass		Length		Weight	
	in.	mm		in.	mm	in.	mm	lb	kg
SZES100	2	51	2800	1/4	6 thick	8.0	203	2-1/2	1.1
SZES101	2	51	20,000	1/4	6 thick	8.0	203	2-1/2	1.1

General:

Air Inlet Size: 1/4" NPT
 Recommended Hose Size: 3/8" (10 mm)
 Performance rated @ 90 psig (6.2 bar) air pressure
 Tools available with BSPT air inlet upon request

Standard Equipment:

Parts list, Safety and Instruction manual
 Safety throttle action

SAFETY Precaution: Read and follow all safety and operating instructions.



WARNING: Face & eye protection must be worn while operating power tools



Rivet Shaver Skirts



Part Number	Cutter Diameter	
	in.	mm
2925-5	5/16	8
2925-6	3/8	10
2925-7	7/16	11
2925-8B	1/2	13
2925-9	9/16	14
2925-10	5/8	16

Router Base Assembly



Part Number	Used On
1992	1971HPB
1993	1971HP
1994	1971HPC

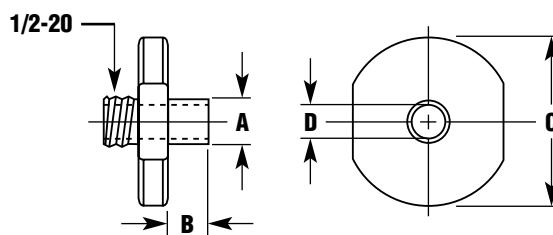
Laminate Trimmer Base

Part No. 1991

For use on HP series routers



Template Guide Chart



Part Number	Dimensions In Inches			
	A Pilot O.D	B Pilot Length	C Flange O.D	D Pilot I.D.
68613-12	3/8	1/4	3/4	9/32
68613-14	3/8	3/8	3/4	9/32
68613-16	3/8	1/2	3/4	9/32
68613-22	3/8	1/8	1-1/2	9/32
68613-24	3/8	1/4	1-1/2	9/32
68613-26	3/8	3/8	1-1/2	9/32
68613-40	7/16	1/4	3/4	21/64
68613-42	7/16	3/8	3/4	21/64
68613-44	7/16	1/2	1-1/2	21/64
68613-48	7/16	1/4	1-1/2	21/64
68613-50	7/16	3/8	1-1/2	21/64
68613-52	7/16	1/2	1-1/2	21/64
68613-62	1/2	1/4	1-1/2	11/32
68613-64	1/2	3/8	1-1/2	11/32
68613-66	1/2	1/2	1-1/2	11/32
68613-72	1/2	1/2	2-1/2	11/32

DRILLS

ASSEMBLY

ABRASIVE

FINISHING

PERCUSSIVE

SPECIALTY

ACCESSORIES



SAFETY Precaution: Read and follow all safety and operating instructions.
WARNING: Face & eye protection must be worn while operating power tools



CONVERSION CHART

	INCH	DECIMAL	MILLIMETER	MILLIMETERS	INCHES	MILLIMETERS	INCHES	FOOT POUNDS	NEWTON METERS	FOOT POUNDS	NEWTON METERS
DRILLS	1/64	.0156	0.397	26	1.0236	90	3.5433				
	1/32	.0312	0.794	27	1.0630	91	3.5827	10	13.5	75	101.7
		.0394	1.000	28	1.1024	92	3.6220	11	14.9	76	103.0
	3/64	.0469	1.191	29	1.1417	93	3.6614	12	16.3	77	104.4
	1/16	.0625	1.587	30	1.1811	94	3.7008	13	17.6	78	105.8
	5/64	.0781	1.984	31	1.2205	95	3.7402	14	18.9	79	107.1
		.0787	2.000	32	1.2598	96	3.7795	15	20.3	80	108.5
	3/32	.0937	2.381	33	1.2992	97	3.8189	16	21.7	81	109.8
	7/64	.1094	2.778	34	1.3386	98	3.8583	17	23.0	82	111.2
		.1181	3.000	35	1.3780	99	3.8976	18	24.4	83	112.5
ASSEMBLY	1/8	.1250	3.175	36	1.4173	100	3.9370	19	25.8	84	113.9
	9/64	.1406	3.572	37	1.4567	110	4.3307	20	27.1	85	115.2
	5/32	.1562	3.969	38	1.4961	120	4.7244	21	28.4	86	116.6
		.1575	4.000	39	1.5354	130	5.1181	22	29.8	87	117.9
	11/64	.1719	4.366	40	1.5748	140	5.5118	23	31.2	88	119.3
	3/16	.1875	4.762	41	1.6142	150	5.9055	24	32.5	89	120.7
		.1968	5.000	42	1.6535	160	6.2992	25	33.9	90	122.0
	13/64	.2031	5.159	43	1.6929	200	7.8740	26	35.3	91	123.4
	7/32	.2187	5.556	44	1.7323	300	11.8110	27	36.6	92	124.7
	15/64	.2344	5.953	45	1.7717	400	15.7480	28	38.0	93	126.0
ABRASIVE		.2362	6.000	46	1.8110	500	19.6850	29	39.3	94	127.4
	1/4	.2500	6.350	47	1.8504	600	23.6220	30	40.7	95	128.8
	17/64	.2656	6.747	48	1.8898	700	27.5591	31	42.0	96	130.2
		.2756	7.000	49	1.9291	800	31.4961	32	43.4	97	131.5
	9/32	.2812	7.144	50	1.9685	900	35.4331	33	44.7	98	132.9
	19/64	.2969	7.541	51	2.0079	1000	39.3701	34	46.1	99	134.2
	5/16	.3125	7.937	52	2.0472			35	47.5	100	135.6
		.3150	8.000	53	2.0866			36	48.8	110	149.0
	21/64	.3281	8.334	54	2.1260			37	50.2	115	156.0
	11/32	.3437	8.731	55	2.1654			38	51.5	120	163.0
FINISHING		.3543	9.000	56	2.2047			39	52.9	125	170.0
	23/64	.3594	9.128	57	2.2441			40	54.2	130	176.0
	3/8	.3750	9.525	58	2.2835			41	55.6	135	183.0
	25/64	.3906	9.922	59	2.3228			42	56.9	140	190.0
		.3937	10.000	60	2.3622			43	58.3	145	197.0
	13/32	.4062	10.319	61	2.4016			44	59.7	150	203.0
	27/64	.4219	10.716	62	2.4409			45	61.0	155	210.0
		.4331	11.000	63	2.4803			46	62.4	160	217.0
	7/16	.4375	11.112	64	2.5197			47	63.7	165	224.0
	29/64	.4531	11.509	65	2.5591			48	65.0	170	231.0
PERCUSSIVE	15/32	.4687	11.906	66	2.5984			49	66.4	175	237.0
		.4724	12.000	67	2.6378			50	67.8	180	244.0
	31/64	.4844	12.303	68	2.6772			51	69.1	185	251.0
	1/2	.5000	12.700	69	2.7165			52	70.5	190	258.0
		.5118	13.000	70	2.7559			53	71.9	195	264.0
	33/64	.5156	13.097	71	2.7953			54	73.2	200	271.0
	17/32	.5312	13.494	72	2.8346			55	74.6	225	305.0
	35/64	.5469	13.891	73	2.8740			56	75.9	250	339.0
		.5512	14.000	74	2.9134			57	77.3	275	373.0
	9/16	.5625	14.287	75	2.9528			58	78.6	300	407.0
SPECIALTY	37/64	.5781	14.684	76	2.9921			59	80.0	350	474.0
		.5906	15.000	77	3.0315			60	81.3	400	542.0
	19/32	.5937	15.081	78	3.0709			61	82.7		
	39/64	.6094	15.478	79	3.1102			62	84.0		
	5/8	.6250	15.875	80	3.1496			63	85.4		
		.6299	16.000	81	3.1890			64	86.8		
	41/64	.6406	16.272	82	3.2283			65	88.1		
	21/32	.6562	16.669	83	3.2677			66	89.5		
		.6693	17.000	84	3.3071			67	90.8		
	43/64	.6719	17.066	85	3.3465			68	92.2		
ACCESSORIES	11/16	.6875	17.462	86	3.3858			69	93.5		
	45/64	.7031	17.859	87	3.4252			70	94.9		
		.7087	18.000	88	3.4646			71	96.3		
	23/32	.7187	18.256	89	3.5039			72	97.6		
	47/64	.7344	18.653					73	99.0		
		.7480	19.000					74	100.3		
	3/4	.7500	19.050								
	49/64	.7656	19.447								
	25/32	.7812	19.844								
		.7874	20.000								
	.7969	20.241									
	.8125	20.637									
	.8268	21.000									
	.8281	21.034									
	.8437	21.431									
	.8594	21.828									
	.8661	22.000									
	.8750	22.225									
	.8906	22.622									
	.9055	23.000									
	.9062	23.019									
	.9219	23.416									
	.9375	23.812									
	.9449	24.000									
	.9531	24.209									
	.9687	24.606									
	.9843	25.000									
	.9844	25.003									
	1.0000	25.400									

INCH POUNDS NEWTON METERS

FOOT POUNDS NEWTON METERS

HEX SOCKET CONVERSIONS

- 10mm=0.394"
- 11mm=0.433"
- 12mm=0.472"
- 13mm=0.512"
- 14mm=0.551"
- 15mm=0.591"
- 16mm=0.630"
- 17mm=0.669"
- 18mm=0.704"
- 19mm=0.748"
- 20mm=0.787"
- 21mm=0.827"

Inch Lbs. x 0.113=Nm; Nm x 8.849=Inch Lbs.; Ft. Lbs x 1.356=Nm; Nm x 0.737=Ft. Lbs.





SIoux POWER TOOLS

A Snap-on Company

European Catalogue

CONTACT INFORMATION

